

WIU FACILITIES MANAGEMENT
PERFORMANCE TEST
FOR FORKLIFT OPERATIONS



EMPLOYEE _____ DATE _____ TIME _____ a.m./p.m.

1. Shows familiarity with truck controls.
2. Gave proper signals when turning.
3. Slowed down at intersection.
4. Sounded horn at intersections.
5. Obeyed signs.
6. Kept a clear view of direction of travel.
7. Turned corners correctly – was aware of rear end swing.
8. Yielded to pedestrians.
9. Drove under control and within proper traffic aisles.
10. Approached load properly.
11. Lifted load properly.
12. Maneuvered properly.
13. Traveled with load at proper height.
14. Lowered load smoothly/slowly.
15. Stops smoothly/completely.
16. Load balanced properly.
17. Forks under load all the way.
18. Carried parts/stock in approved containers.
19. Checked bridge plates/ramps.
20. Did place loads within marked area.
21. Did stack loads evenly and neatly.
22. Did drive backward when required.
23. Did check load weights.
24. Did place forks on the floor when parked, controls neutralized, brake on set, power off.
25. Followed proper instructions for maintenance – checked both at beginning and end.

Total Rating _____

Evaluator _____

FORKLIFT COURSE TEST

Course Name: **Forklift Operation and Safety**

First Name:

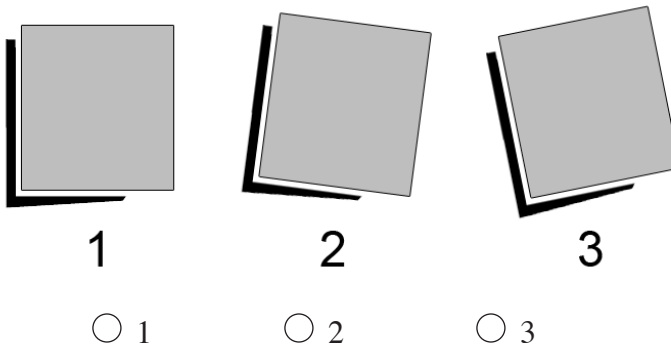
Last Name:

Department

No. of questions – 28

Pass mark is – 70%

1. It is safe to give someone a ride on your lift truck.
 True False
2. Lift trucks use a hydraulic cylinder attached to chains to raise and lower the forks.
 True False
3. Wide and long loads are more unstable than other types of loads.
 True False
4. Before loading or unloading a trailer at a loading dock, you should:
 Inspect the floor of the trailer to ensure that it will support the lift truck and the load.
 Chock the wheels of the trailer.
 Make sure that dock plates, boards, and ramps are in place and secure.
 All of the above.
5. A brake pedal that sinks to the floor under continued pressure is in good operating condition.
 True False
6. All industrial trucks (lift trucks) are equipped with a clutch.
 True False
7. Of the three load positions illustrated below, which is the most stable?

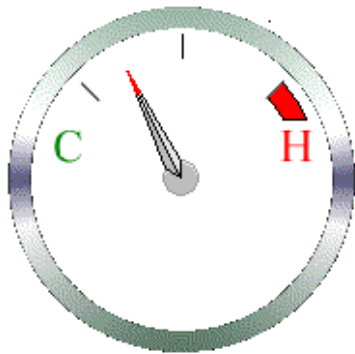


8. The front wheels of lift truck serve as the _____ between the weight of the truck and the weight of the load being carried.
- Balance Point
 - Fulcrum Point
 - Center of Gravity
 - Seesaw Center
9. In order to solve an “inch Pound Equation“, you must use information provided on a truck’s data plate.
- True False
10. The three parts of a lift truck are the body (truck), overhead guard, and hydraulic lift.
- True False
11. You can place your hands and feet outside of the operator’s compartment, as long as your head and body are protected.
- True False
12. Always check the air pressure in tires from the side, not by facing the tread.
- True False
13. The load capacity of a truck can be found on its data plate.
- True False
14. Which of the following is NOT a type of lift truck?
- Gasoline Powered
 - Diesel Powered
 - Air-cooled Powered
 - Electric Powered
15. All industrial trucks (lift trucks) are equipped with controls which allow you to raise/lower and tilt the forks.
- True False
16. If the lift mechanism on your lift fails, you should try to repair the chains or hydraulic system yourself.
- True False
17. It is part of your job to complete a Daily Operator’s Report after you have thoroughly inspected your lift truck.
- True False

18. If your truck starts to tip over:
- Don't jump
 - Stay in your seat
 - Grip the wheel securely
 - Brace yourself with your feet
 - All of the above
19. What is wrong with the illustration?



- Driving in the wrong direction
 - Load is too high
 - Nothing
20. The gauge below is a/an:



- Gas Gauge
- Amperes Gauge
- Oil Gauge
- Total Hour Meter
- None of the above

21. The most important safety device on your lift truck is _____
- Horn
 - Seat Belt
 - Warning Light
 - Backup Alarm
 - You
22. Rear wheel steering is used on lift trucks because it gives the operator greater control when using the forks.
- True False
23. You can stand under the forks, if the engine of the lift truck is turned off.
- True False
24. Anyone who has a valid driver's license can operate a lift truck.
- True False
25. When parking or leaving your truck, you should:
- Park or leave your truck in a safe area away from traffic
 - Lower the forks until they are flat on the floor
 - Turn off the engine
 - Set the parking brake and set the directional control to neutral
 - All of the above
26. When transporting a load, you should not raise your load more than 8" from the ground.
- True False
27. You can drive a lift truck over any type of surface.
- True False
28. Which of the following should NOT be allowed during the refueling or recharging process?
- Park your lift truck in a designated refueling/recharging area
 - Do not block doorways or access to production or emergency equipment
 - Keep a flame burning nearby to burn off unwanted vapors or gases
 - Check to see that there is a fire extinguisher nearby

You scored _____% on the test